



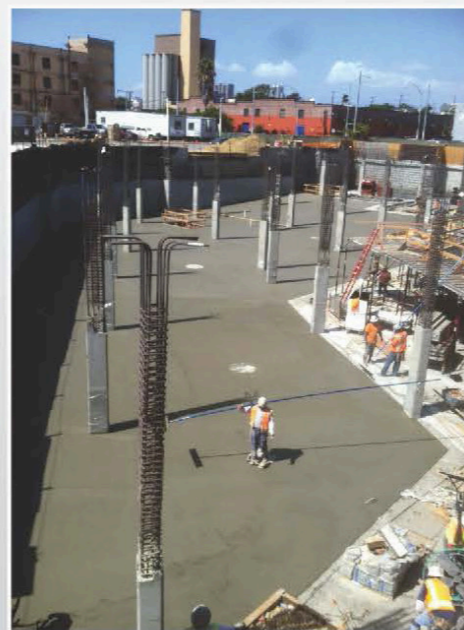
ACCENT CONSTRUCTION INC.
CERTIFIED SMALL MINORITY VETERAN OWNED BUSINESS

PLACE & FINISH

Southern California based Union concrete contractor, specializing in Type I and Type II projects built primarily of reinforced concrete and steel.

Accent Construction Inc. self performs all structural and architectural concrete work with its own forces including forming, placing and finishing. We maintain and operate our own form work and equipment, and have extensive experience in budgeting and construction of all types of concrete work. This experience has been utilized by owner-builders, construction managers, general / prime contractors and other concrete contractors.

Accent performs concrete work on major civic structures; educational and research facilities; parking structures; commercial, retail, medical and healthcare buildings; and multifamily residential complexes.



COMPANY FACT SHEET



ACCENT CONSTRUCTION INC.
 CERTIFIED SMALL MINORITY VETERAN OWNED BUSINESS

Who We Are:

Accent Construction Inc. is a Southern California based Union concrete contractor, specializing in Type I and Type II projects built primarily of reinforced concrete. Accent performs concrete work on major civic structures; educational and research facilities; parking structures; commercial, retail, medical and healthcare buildings; and multifamily residential complexes.

Rodney Thompson President/CEO has well over two decades of experience in the Construction industry whose areas of strength include Project Management, Estimating, and Design Build Building Construction.

How We Work:

Accent Construction Inc. self performs all structural and architectural concrete work with its own forces including forming, placing and finishing. We maintain and operate our own formwork and equipment, and have extensive experience in budgeting and construction of all types of concrete work. This experience has been utilized by owner-builders, construction managers, general / prime contractors and other concrete contractors.

What We Do:

Accent Construction Inc. frequently performs as stand-alone place and finish specialists with our 35-50 man Union finishing crew. Depending on customer needs and budget, finishing services include or excludes customer provided concrete and concrete pumping services.

Accent Construction Inc. often functions as part of a strategic team that includes a large pumping firm, concrete supplier and Accent constructions' placing and finishing services. This team has proven to be quite effective at reaching project small business "goals" with high quality as the primary goal.

Past Project Achievements Include:

- **University of Arkansas School of Architecture** – Formwork, placing & finish
- **Grossmont Hospital** - Parking Garage
- **Cove Senior Homes, San Marcos** - Podium deck, subterranean parking
- **Parkview Apartments- Subterranean parking-** podium deck
- **The Legends Condo's Downtown-** 24 stories, 4 levels subterranean parking
- **Repeated Outstanding Performance Evaluations**

Licenses:

- Cement Mason Local #500
- CA Contractor License #980581

Certifications:

Accent Construction is a certified SLBE, MBE, Veteran, National CPUC Clearinghouse business entity.



Cement Mason Local #500
 CA Cont. Lic. #980581

619-954-4852
 10679 Westview Parkway, 2nd Floor
 San Diego, CA 92126
 rthompson@accenteci.com
 www.accenteci.com